

Saban Community Clinic

2016 IMPACT SUMMARY

Our Work

Saban Community Clinic opened its doors in 1967 as the Los Angeles Free Clinic, rooted in a fundamental belief that health care is a right, not a privilege.

Today, with three locations, the Clinic continues to operate on these founding principles, providing quality health care and striving to redefine community clinic health care.

Whole Person Care is at the core of everything we do. Our integrated, holistic approach ensures that each patient has access to all of the medical and complementary care required, truly allowing patients to enjoy the benefits of a medical home.



HEALTH COVERAGE STATUS

32% UNINSURED
\$4.5 MILLION OF SERVICES PROVIDED. SOME PAYMENTS RECEIVED VIA MY HEALTH LA.
 62% MEDICAID/AFFORDABLE CARE ACT
 3% MEDICARE
 3% PRIVATE

28,686
 MEDICATION PRESCRIPTIONS
 DISPENSED FREE OF CHARGE

107,011
 TOTAL PATIENT
 VISITS

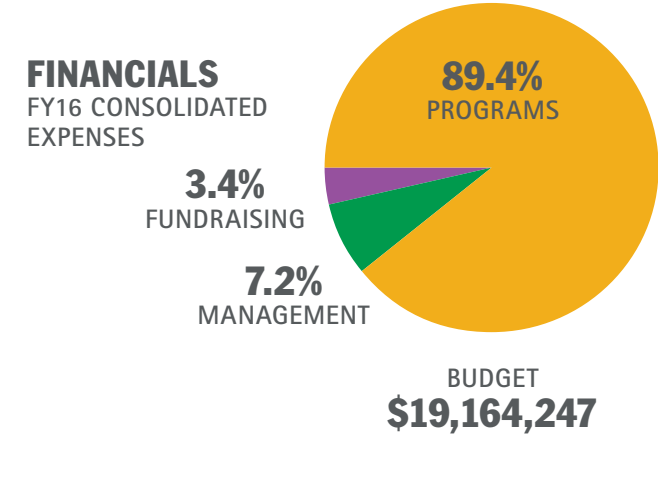
10%
 OF PATIENTS
 ARE HOMELESS

72%
 OF PATIENTS
 LIVING AT OR
 BELOW THE
 POVERTY LINE

12,116
 TOTAL INDIVIDUALS
 ENROLLED
 IN AFFORDABLE
 CARE ACT

THREE LOCATIONS

- BEVERLY HEALTH CENTER**
8405 Beverly Blvd., Los Angeles, CA 90048
- S. MARK TAPER FOUNDATION HEALTH CENTER**
6043 Hollywood Blvd., Los Angeles, CA 90028
- THE WALLIS ANNENBERG CHILDREN & FAMILY HEALTH CENTER**
5205 Melrose Ave., Los Angeles, CA 90038





Our Impact: Redefining Community Clinic Care

In 2016, we helped more members of our community.

Patient Centered Medical Home

An integrated and holistic approach to medicine focused on the patient and their needs. Under this new program, we will increase the quality of care and provide access to all the medical and complimentary care under one roof.

Life-Saving Screenings

Colorectal Screenings up **48%**
Cervical Cancer Screenings up **62%**
Breast Cancer Screenings up **14%**
HIV Linkage to Care up **78%**

Recognized by American Cancer Society as a leader in Colorectal Screenings.

Pharmacy

First pharmacy opened at The Wallis Annenberg Children & Family Health Center, allowing all patients to receive their medications on site, regardless of insurance status.

Behavioral Health

Psychiatry services and trauma groups were expanded across all three sites and a new men's support group was started.

Opioid Clinic

In 2016, we assisted **132 patients** wean their opioid addictions. This 'Take Charge Clinic' focuses on reducing the use of opioids among dependent and at-risk patients. A dynamic team of Physicians, Nurse-Practitioners, Pharmacists, Behavioral Health Specialists, Physical Therapists, and Pain Control Consultants work together to coordinate each patient's care and pain management.

Case Management

Homeless patients receive case management services at all three Clinic locations, including linkages to housing, jobs and social services. In addition, the Clinic's free shower program hosted **7,082 showers** in 2016, providing a safe and clean space for homeless individuals to rejuvenate. Shower participants are provided with toiletries, new undergarments and clothes.

